



TEST REPORT

Applicant: Goldenhot Plastic & Hardware Products Co., Ltd
Address: Building 3, No.2, Yi an Middle road, yantian Village, Fenggang Town DongGuan, Guangdong, China

Manufacturer: Goldenhot Plastic & Hardware Products Co., Ltd
Address: Building 3, No.2, Yi an Middle road, yantian Village, Fenggang Town DongGuan, Guangdong, China

The following samples were submitted and identified on behalf of the clients as:

Sample name: Smart Composter
Brand: Ouaken, Garvee, Goldhot, SUNG TEK, Residesy, COSTWAY, VIPBATH, Nutrichef
Model(s): CY03A, CY01, CY01A, CY01B, CY01C, ES10437GB-WH, ES10437GB-GR, ES10437DE-WH, ES10437DE-GR, CY02, CY02A, CY02B, CY02C, CY02D, CY02E, CY04, ES10438GB-WH, ES10438GB-GR, ES10438DE-WH, ES10438DE-GR, CY03, CY03B, CY03C, CY03D, CY03E, CY05, CY06, CY08, CY09, ES10439GB-WH, ES10439GB-GR, ES10439DE-WH, ES10439DE-GR, NCCMP4LGY, NCCMP4LWH
Batch No.: /
Sample received date: Sep. 19, 2025
Testing period: Sep. 19, 2025 to Sep. 26, 2025
Test Method: Please refer to next page(s).
Test Result: Please refer to next page(s).

Result Summary :

Test Requested	Conclusion
European Directive 2011/65/EU and amendment (EU) 2015/863 on the restriction of the use of certain hazardous substances in electrical and electronic equipment	PASS

Tested By: 	Check By: 	Approve By:
-----------------------	----------------------	------------------------

Date: Oct. 29, 2025

Test Method:

A. Screening test by XRF spectroscopy

XRF screening limits for regulated elements according to IEC 62321-3-1:2013

Element	Screening limit / mg/kg		MDL	
	Polymers and metals	Composite material	Polymers	Other material
Pb	$BL \leq (700-3\sigma) < X < (1300+3\sigma) \leq OL$	$BL \leq (500-3\sigma) < X < (1500+3\sigma) \leq OL$	10mg/kg	50mg/kg
Cd	$BL \leq (70-3\sigma) < X < (130+3\sigma) \leq OL$	$BL \leq (50-3\sigma) < X < (150+3\sigma) \leq OL$	10mg/kg	50mg/kg
Hg	$BL \leq (700-3\sigma) < X < (1300+3\sigma) \leq OL$	$BL \leq (500-3\sigma) < X < (1500+3\sigma) \leq OL$	10mg/kg	50mg/kg
Cr	$BL \leq (700-3\sigma) < X$	$BL \leq (500-3\sigma) < X$	10mg/kg	50mg/kg
Br	$BL \leq (300-3\sigma) < X$ (non-metal only)	$BL \leq (250-3\sigma) < X$	10mg/kg	50mg/kg

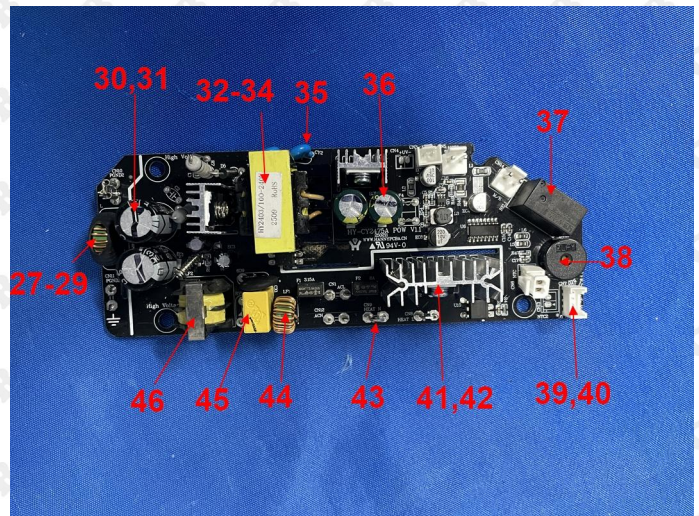
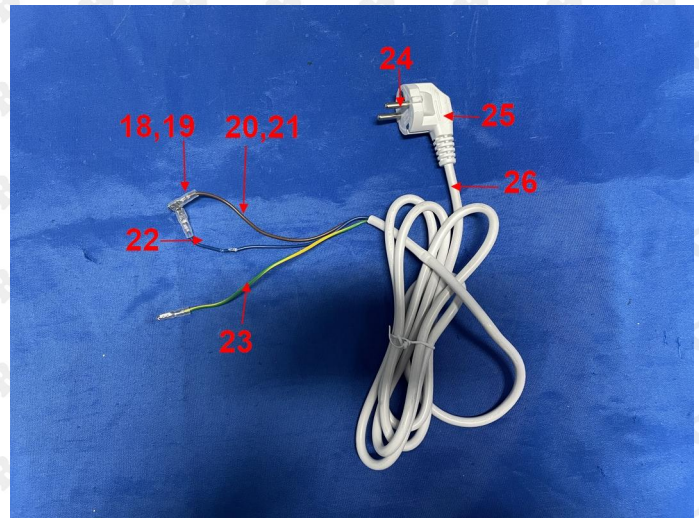
B. Chemical Test

Test Item(s)	Test Method	Analysis Equipment(s)	MDL	Limit
Lead (Pb)	IEC 62321-5:2013	ICP-OES	2 mg/kg	1000mg/kg
Cadmium (Cd)	IEC 62321-5:2013	ICP-OES	2 mg/kg	100mg/kg
Mercury (Hg)	IEC 62321-4:2013+AMD1:2017	ICP-OES	2 mg/kg	1000mg/kg
Hexavalent Chromium Cr(VI)	IEC 62321-7-1:2015	UV-VIS	--	1000mg/kg
	IEC 62321-7-2:2017		10mg/kg	1000mg/kg
Polybrominated Biphenyls (PBBs)	IEC 62321-6:2015	GC-MS	10mg/kg	1000mg/kg
Polybrominated Diphenyl Ethers (PBDEs)	IEC 62321-6:2015	GC-MS	10mg/kg	1000mg/kg
Phthalate	IEC 62321-8:2017	GC-MS	30mg/kg	1000mg/kg

Tested material list

No.	Description	Photo(s) of tested material
1	White plastic shell	
2	White translucent display screen	
3	Light gray plastic	
4	Light gray rubber non-slip mat	
5	Silver metal case	
6	Silver metal case	
7	Silver metal handle pull lever	
8	Silver metal part	
9	Black plated metal shell	
10	Black rubber handle	
11	Black plastic sheet	
12	Grey rubber	
13	Black adsorbed carbon	
14	Grey plastic	
15	White plastic	
16	Black plastic sheet	
17	Silver metal part	

18	Transparent rubber sleeve
19	Silver metal sheet
20	Brown plastic wire skin
21	Metal core
22	Blue plastic wire skin
23	Yellow& green plastic wire skin
24	Silver metal round pin
25	White plastic handle
26	White plastic wire skin
27	Black rubber sleeve (inductor)
28	Green ceramic core (inductor)
29	Copper colored metal wire (inductor)
30	Black plastic case (E-CAP)
31	Silver metal case (E-CAP)
32	Yollow plastic film (Transformer)
33	Copper colored metal wire (Transformer)
34	Black plastic frame (Transformer)
35	Blue capacitor
36	Silver metal case (E-CAP)
37	Black body
38	Black buzzer
39	White plastic wire buckle
40	Silver metal pin
41	Silver metal
42	Silver metal screw
43	Silver metal part
44	Copper colored metal wire
45	Yellpw capacitor
46	Silver metal case



TEST REPORT

47	Solder point	
48	Black PCB	

Note: test samples were specified by applicant.

Test Result(s):

No.	XRF screening Result					Chemical confirm Result (mg/kg)	Remark	Conclusion
	Pb	Cd	Hg	Cr	Br			
1	BL	BL	BL	BL	BL	---	---	PASS
2	BL	BL	BL	BL	BL	---	---	PASS
3	BL	BL	BL	BL	BL	---	---	PASS
4	BL	BL	BL	BL	BL	---	---	PASS
5	BL	BL	BL	BL	NA	---	---	PASS
6	BL	BL	BL	X	NA	Cr ⁶⁺ : Negative	---	PASS
7	BL	BL	BL	X	NA	Cr ⁶⁺ : Negative	---	PASS
8	BL	BL	BL	X	NA	Cr ⁶⁺ : Negative	---	PASS
9	BL	BL	BL	BL	NA	---	---	PASS
10	BL	BL	BL	BL	BL	---	---	PASS
11	BL	BL	BL	BL	BL	---	---	PASS
12	BL	BL	BL	BL	BL	---	---	PASS
13	BL	BL	BL	BL	BL	---	---	PASS



TEST REPORT

Page 6 of 13

REPORT No.: CTB25091904703C01

14	BL	BL	BL	BL	BL	---	---	PASS
15	BL	BL	BL	BL	BL	---	---	PASS
16	BL	BL	BL	X	BL	Cr ⁶⁺ : Negative	---	PASS
17	BL	BL	BL	X	NA	Cr ⁶⁺ : Negative	---	PASS
18	BL	BL	BL	BL	BL	---	---	PASS
19	BL	BL	BL	BL	NA	---	---	PASS
20	BL	BL	BL	BL	BL	---	---	PASS
21	BL	BL	BL	BL	NA	---	---	PASS
22	BL	BL	BL	BL	BL	---	---	PASS
23	BL	BL	BL	BL	BL	---	---	PASS
24	BL	BL	BL	BL	NA	---	---	PASS
25	BL	BL	BL	BL	BL	---	---	PASS
26	BL	BL	BL	BL	BL	---	---	PASS
27	BL	BL	BL	BL	BL	---	---	PASS
28	BL	BL	BL	BL	BL	---	---	PASS
29	BL	BL	BL	BL	NA	---	---	PASS
30	BL	BL	BL	BL	BL	---	---	PASS
31	BL	BL	BL	BL	NA	---	---	PASS
32	BL	BL	BL	BL	BL	---	---	PASS
33	BL	BL	BL	BL	NA	---	---	PASS
34	BL	BL	BL	BL	NA	---	---	PASS
35	BL	BL	BL	BL	BL	---	---	PASS
36	BL	BL	BL	BL	NA	---	---	PASS
37	BL	BL	BL	X	BL	PBBs: N.D PBDEs: N.D	---	PASS
38	BL	BL	BL	X	BL	PBBs: N.D PBDEs: N.D	---	PASS
39	BL	BL	BL	BL	BL	---	---	PASS

TEST REPORT

40	BL	BL	BL	BL	NA	---	---	PASS
41	BL	BL	BL	BL	NA	---	---	PASS
42	BL	BL	BL	X	NA	Cr ⁶⁺ : Negative	---	PASS
43	BL	BL	BL	X	NA	Cr ⁶⁺ : Negative	---	PASS
44	BL	BL	BL	BL	NA	---	---	PASS
45	BL	BL	BL	BL	BL	---	---	PASS
46	BL	BL	BL	X	NA	Cr ⁶⁺ : Negative	---	PASS
47	BL	BL	BL	BL	NA	---	---	PASS
48	BL	BL	BL	BL	BL	---	---	PASS

Test Item(s)	Dibutyl Phthalate (DBP) (mg/kg)	Benzylbutyl Phthalate (BBP) (mg/kg)	Bis-(2-ethylhexyl) Phthalate (DEHP) (mg/kg)	Diisobutyl phthalate (DIBP) (mg/kg)	Conclusion
CAS No.	84-74-2	85-68-7	117-81-7	84-69-5	
Limit	1000	1000	1000	1000	
No.	Result (mg/kg)				
1+2	N.D	N.D	N.D	N.D	PASS
25+26	N.D	N.D	N.D	N.D	PASS
10	N.D	N.D	N.D	N.D	PASS
4	N.D	N.D	N.D	N.D	PASS
3+11+14+15+16	N.D	N.D	N.D	N.D	PASS
13	N.D	N.D	N.D	N.D	PASS
12	N.D	N.D	N.D	N.D	PASS
18	N.D	N.D	N.D	N.D	PASS
20+22+23	N.D	N.D	N.D	N.D	PASS
27	N.D	N.D	N.D	N.D	PASS
32	N.D	N.D	N.D	N.D	PASS
28+35+37+45	N.D	N.D	N.D	N.D	PASS
30+34+38+39+48	N.D	N.D	N.D	N.D	PASS

Remark:

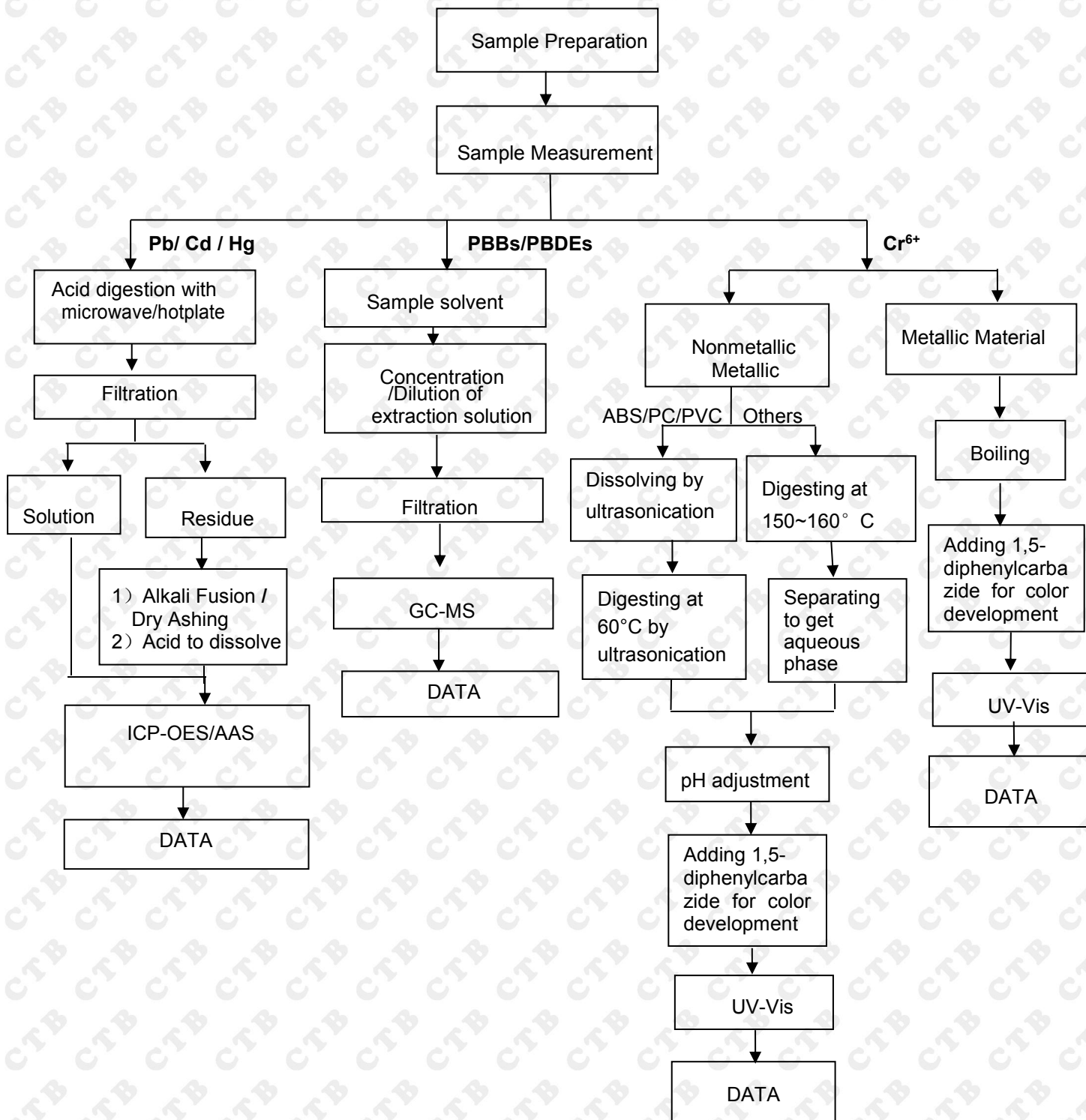
1. BL = below the limit
2. OL = over the limit
3. X = inconclusive, chemical confirm test is needed
4. NA = metal not applicable
5. mg/kg = milligram per kilogram = ppm
6. N.D = not detected
7. Negative = Absence of Cr(VI), the detected Cr(VI) concentration in the boiling water extraction solution is less than $0.1\mu\text{g}/\text{cm}^2$ sample surface area used.
8. Positive = Presence of Cr(VI), the detected Cr(VI) concentration in the boiling water extraction solution is equal to or greater than $0.13\mu\text{g}/\text{cm}^2$
9. sample surface area used. The limit for composite test should be divided by the mixed number.

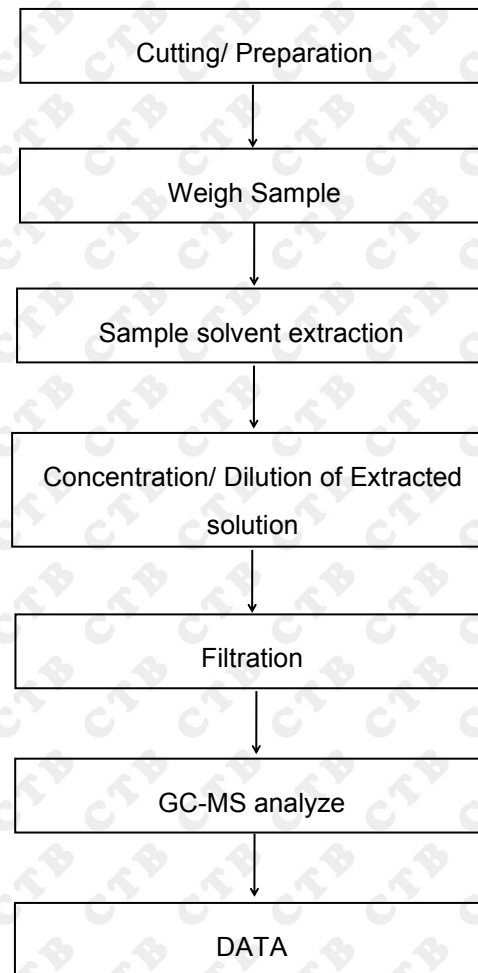
Note:

1. When perform screening tests, it is the result on total Br while test item on restricted substances is PBBs/PBDEs, it is the result on total Cr while test item on restricted substances is Cr^{6+} .
2. Pb, Cd, Hg, Cr and Br results are obtained by EDXRF for primary screening, and further chemical testing by ICP-OES (for Cd, Pb, Hg), UV-VIS (for Cr^{6+}) and GC-MS (for PBBs, PBDEs) is needed to be performed, if the concentration falls into the inconclusive area according to IEC 62321-3-1:2013.
3. For the XRF screening test for RoHS elements, the reading may be different to the actual content in the sample be of non-uniformity composition.
4. As requested by the applicant, EU RoHS test was conducted only on components listed in this report. Other components were not tested.

Test flow chart

1.Pb/Cd/Hg/Cr⁶⁺/PBBs/PBDEs



2. Phthalate test flow chart

TEST REPORT

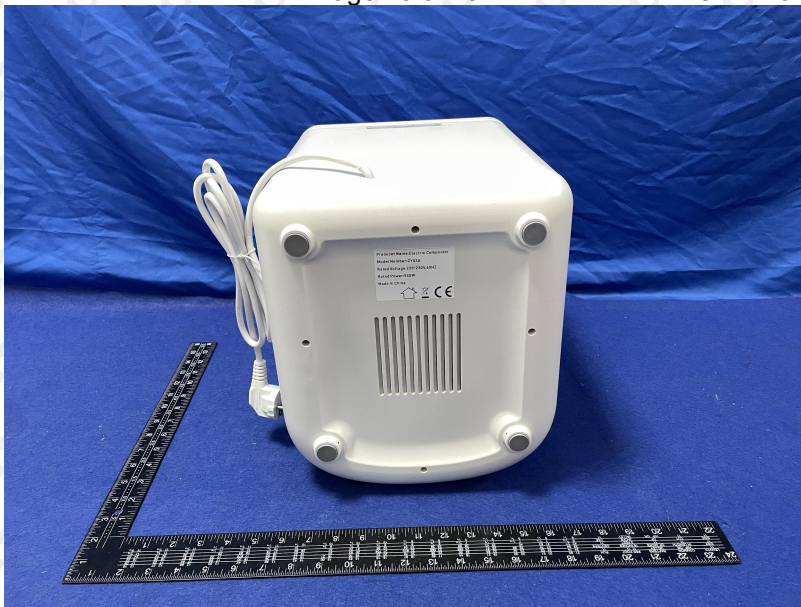
Photo documentation



TEST REPORT



TEST REPORT



*** End of Report ***

Note: If there is any objection to the inspection results in this report, please submit a written report to the company within 15 days from the date of receiving the report. The test report is effective only with both signature and specialized stamp. This result(s) shown in this report refer only to the sample(s) tested. Without written approval of Shenzhen CTB Testing Technology Co., Ltd. this report can't be reproduced except in full. The tested sample(s) and the sample information are provided by the client. "★" indicates the testing items were fulfilled by subcontracted lab. "※" indicates the items are not in CNAS accreditation scope.